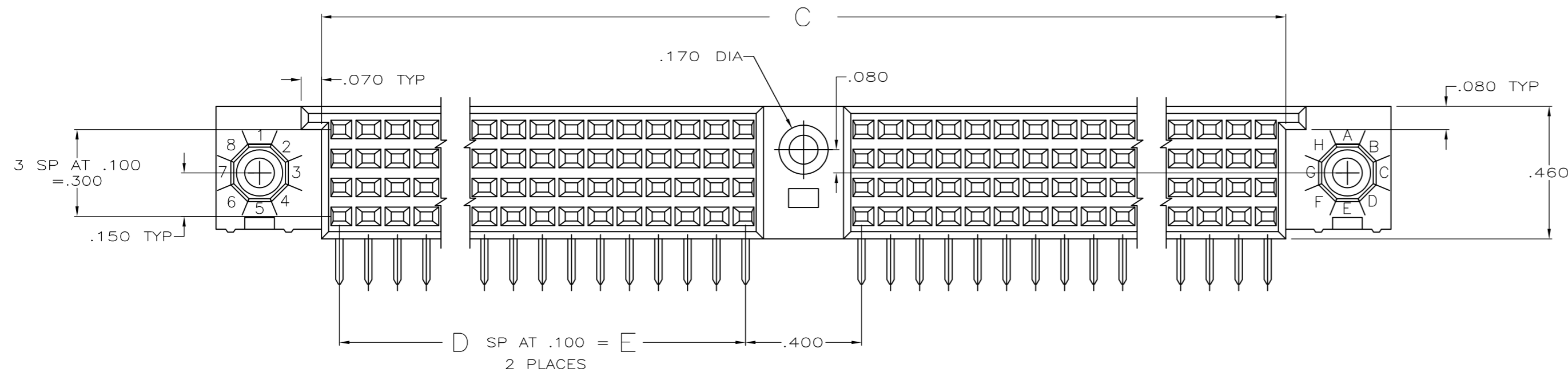
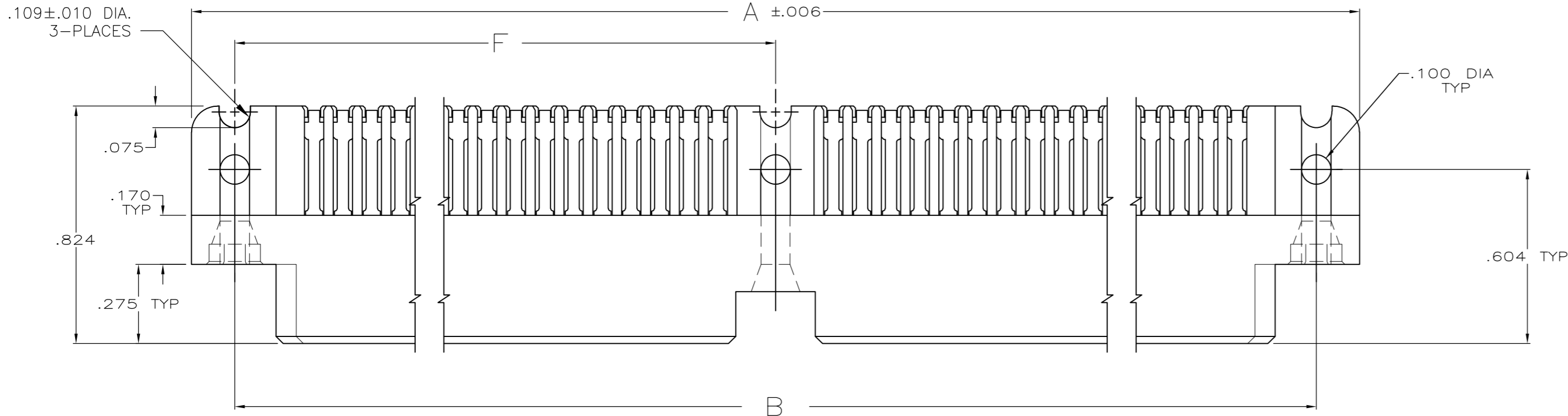
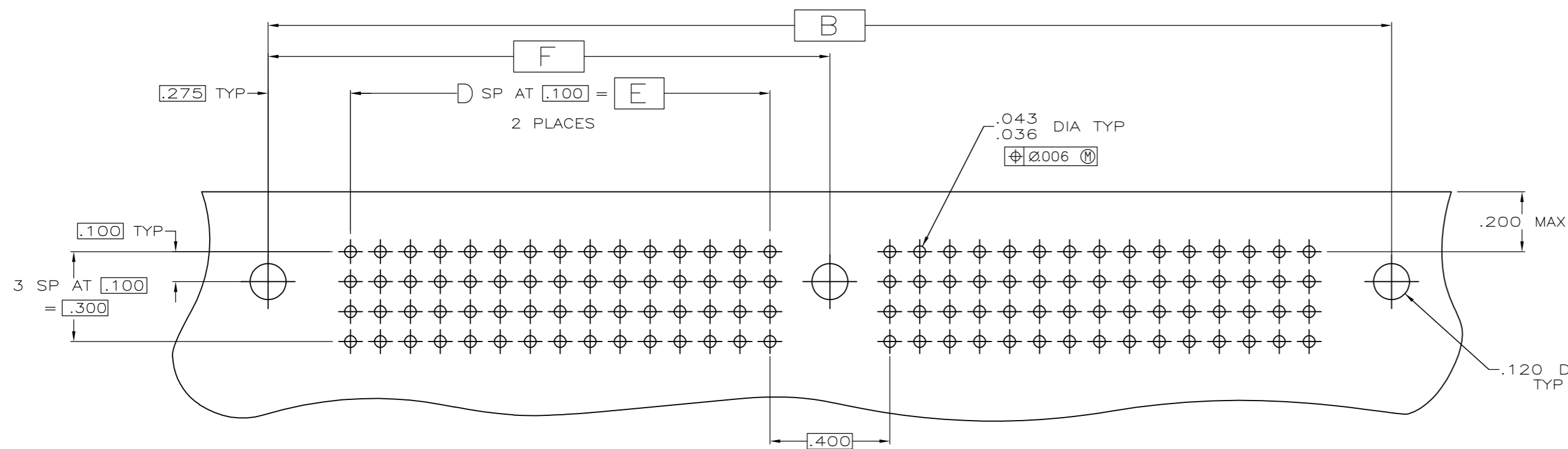
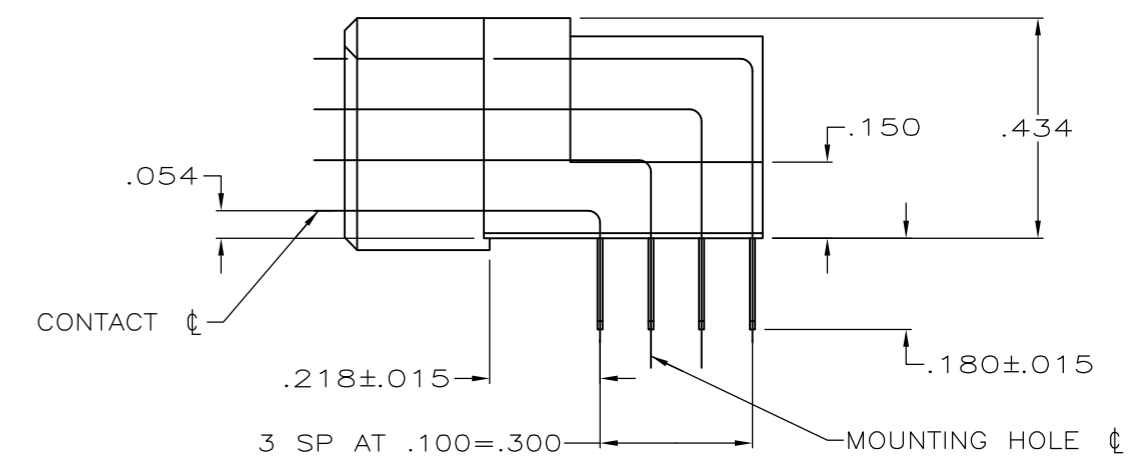


THIS DRAWING IS UNPUBLISHED. RELEASED FOR PUBLICATION
 © COPYRIGHT BY TYCO ELECTRONICS CORPORATION. ALL RIGHTS RESERVED.

LOC	DIST	REVISIONS					
		P	LTR	DESCRIPTION	DATE	DWN	APVD
AD	25						
		K1		REVISED PER ECO-08-002028	23JAN08	DH	AS



- 1 HOUSING MATERIAL: THERMOPLASTIC.
- 2 CONTACT MATERIAL: COPPER ALLOY.
- 3 CONTACT FINISH: .000050-.000100 NICKEL UNDERPLATE ALL OVER WITH .000030 GOLD IN CONTACT AREA AND .000100-.000200 TIN-LEAD PLATED POSTS.



RECOMENDED P.C. BOARD LAYOUT

OBSOLETE	4.775	4.300	43	9.124	9.550	9.850	352	534048-5
OBSOLETE	6.375	5.900	59	12.324	12.750	13.050	480	534048-4
OBSOLETE	4.975	4.500	45	9.524	9.950	10.250	368	534048-3
	4.675	4.200	42	8.924	9.350	9.650	344	534048-2
OBSOLETE	4.375	3.900	39	8.324	8.750	9.050	320	534048-1
	F	E	D	C	B	A	NO OF POSN	PART NUMBER

THIS DRAWING IS A CONTROLLED DOCUMENT.

DIMENSIONS: mm	TOLERANCES UNLESS OTHERWISE SPECIFIED:	DWN J GALLUCCI BG 6-11-91	Tyco Electronics Corporation Harrisburg, PA 17105-3608
		CHK DAVID HOFFMAN 12/10/91	
		APVD WAYNE MILLHIMES 12/10/91	NAME
		PRODUCT SPEC 108-1098	ASSEMBLY, RECEPTACLE, TWIN BEAM CONNECTOR, 4 ROW, 2 MOUNTING HOLES, 1 GUIDE PIN, .180 POST LENGTH
		APPLICATION SPEC	RESTRICTED TO
MATERIAL	FINISH	WEIGHT	SIZE CAGE CODE DRAWING NO
1 2	3	-	A2 00779 C=534048
CUSTOMER DRAWING		SCALE 4:1	SHEET 1 of 1 REV K1